

Takeshiba Shin Hakkei - A town that weaves the value of greenery while caring for nature and nurturing living things -

The Takeshiba area is adjacent to the Hamarikyu Gardens, the former Shiba Rikyu Gardens, and other rich natural environments blended with historical culture. It is also surrounded by a rare natural environment in the heart of the city, with the proximity of waterfront environments such as Takeshiba Pier, which can be expected to connect with the vast ocean of Tokyo Bay and the greenery of Odaiba.

Taking advantage of this location, the **Tokyo Port City Takeshiba Office Tower** has developed a skip terrace on the sixth floor of the 2 building as a space for relaxation surrounded by greenery. Centered on this terrace, the building will contribute to reducing the environmental impact of the entire facility, conserving urban biodiversity, and developing activities that will contribute to the achievement of the SDGs.

As part of our efforts to conserve biodiversity, we are developing the "**Takeshiba New Eight Views**" within the building, which consists of eight views: **sky, bees, rice paddies, vegetable gardens, incense, water, islands, rain**, with the aim of increasing awareness and understanding of biodiversity. In addition, the **Urban Biodiversity Center (UBC)** has been established on the 3 floor of the building as a base for these efforts.

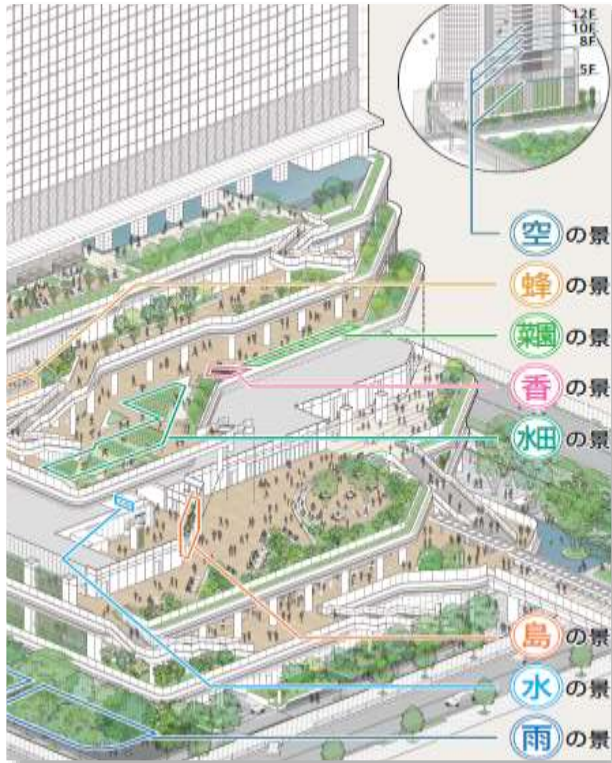
In addition to creating a green environment through the "**Takeshiba New Eight Views**", various workshops will be held at the **Takeshiba UBC** to provide environmental education, community exchange, and information dissemination. Specifically, we will provide opportunities to experience contact with living things, experience farming, connect with food, and interact with local people.

Tokyu Land Corporation is developing the "**Green Work Style**" concept in the office building business to solve the various problems faced by workers by utilizing the power of greenery. In this building as well, we will use the "**Takeshiba Shin Hakkei**" to propose a new work style where office workers can work while feeling the water and greenery, and use the power of greenery to support increased productivity and better mental and physical health.



Takeshiba's new eight sceneries - location of all eight views -

The Third floor, Takeshiba Machizukuri Plaza, will be the base of the tour and will guide you to the locations of each of the eight sceneries.



5F・8F・10F・12F

<View of Sky> (Not available for viewing)

5F Skip Terrace

<View of Bees> Tour

4F Skip Terrace

<View of paddy fields>

<View of vegetable garden>

<View of incense> Tour

3F Takeshiba Machizukuri Plaza

<Hakkei as a whole> Observation of wall panels

<View of Sky> Monitor observation

3F Common corridor

<View of water>

<View of island> Tour

1st Floor Open Space

<View of Rain> Tour

<東京ポートシティ竹芝 (TOKYO PORTCITY TAKESHIBA) オフィスタワー>

- * 「Green Work Style」 「Green Action」 ～水と緑を感じながら働く新しいワークスタイルを提案～
- * 施設全体で環境負荷の低減や都市の生物多様性保全に貢献し、SDGs達成にも寄与。
- * 最新テクノロジーで施設内の混雑回避や利便性向上に貢献する、最先端のスマートビルを構築。

<竹芝スキップテラス>

緑に囲まれた
憩いの空間

* 2～6階に設置

* 3階には緑豊かな
GREEN PLAZAを
設置。

* 4・5階に新八景を
設置。

* 緑の力で
オフィスワーカーの
生産性向上や
心身の健康増進をサポート。

<3階まちづくりプラザ (CITY PLAZA)>

<竹芝UBC (Urban Biodiversity Center)>

<竹芝新八景>

都市の生物多様性の保全に貢献

- 5/8/10/12階; 空の景
- 5階; 蜂の景
- 4階; 水田の景/菜園の景/香の景
- 3階; 水の景/島の景
- 1階; 雨の景

* 他組織や団体等との連携調整
～他部署、外部団体、他～

* 竹芝新八景を活用しての
環境教育・地域交流・情報発信

～ワークショップ等の展開～
～イベント等の企画・実施～

～書籍・資料コーナー運営～

* 竹芝新八景に関わる認知広報活動
～インフォメーションデスク～

* 竹芝新八景の維持管理・運営
～日常メンテナンス等～

* 竹芝エリアマネジメントの活動の場・拠点
～イベント等の開催、会議、資料展示等～

* 東京ポートシティ竹芝の対外活動の場・拠点
～様々なワークショップ、会議・説明会等～

* 一般来訪者やオフィスワーカー等の休憩＆食事の場

Eight New Views of Takeshiba - An Introduction to Each View

<5F>

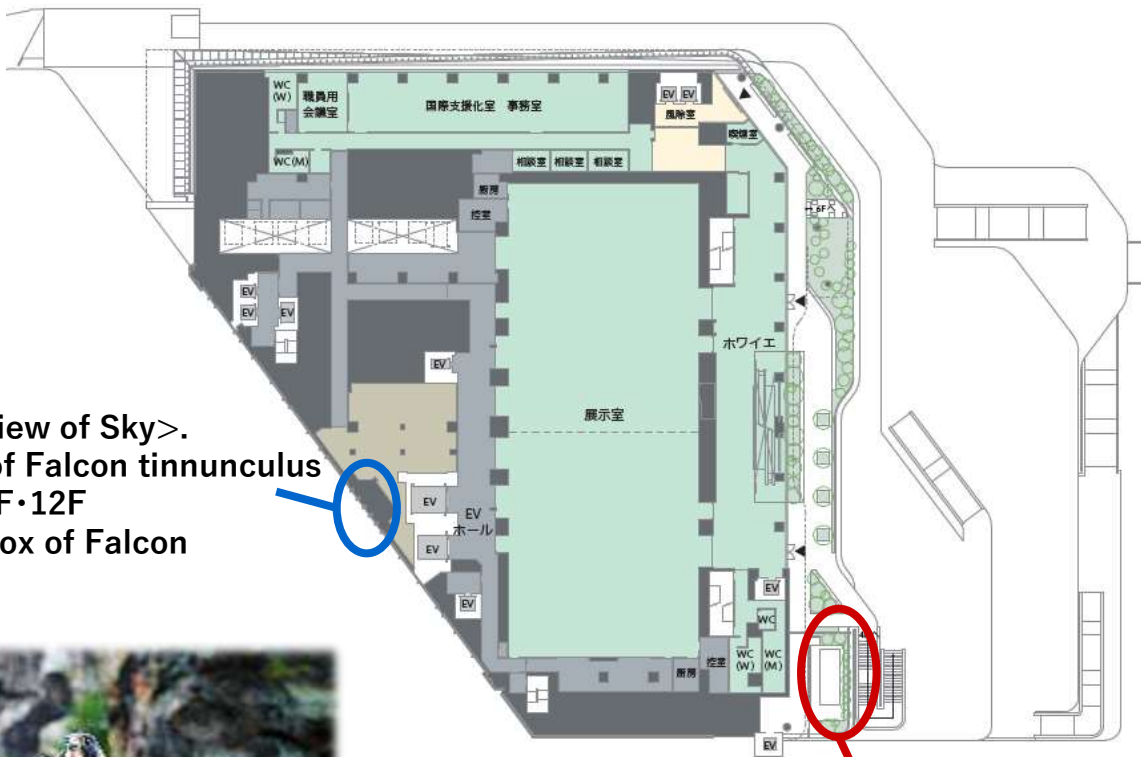
View of bees - bees play an important role in the ecosystem by carrying pollen.

Bees in an ecosystem are connected to the surrounding environment and to other living things. It is a creature that teaches us. We are working on urban beekeeping in our building. Bees play an active role in preserving the richness of nature.

<5F·8F·10F·12F>

View of Sky - Nest boxes for nesting falcons and butterflies on the walls of buildings.

As the nesting sites of birds of prey such as falcons and gibbons are decreasing, in urban areas, The challenge is to restore and harmonize the environment so that they can coexist with humans. In our building, we have installed nesting boxes for nests, and we are working on the development of a nesting site. The project will contribute to the creation of a habitat for birds of prey, an endangered species that is also on the Red List.



5F <View of Sky>
Nest of Falcon tinnunculus
8F·10F·12F
nest box of Falcon



<View of the sky>
Image



5F <View of bees>
(honeybee hive)

<View of Bees> Image

Eight New Views of Takeshiba - An Introduction to Each View

<4F>

View of Paddy Field

- Experiencing Japan's Rice Cultivation Culture with the Changes of the Seasons - Paddy Fields

Paddy fields are used to create satoyama landscapes, supply food, and provide habitats for organisms. The building has existed with the history of Japan with its multifaceted functions. In this building Environmentally friendly natural cultivation is carried out, and the site is also used as a place for environmental education.

View of Vegetable Garden

- A vegetable garden where you can experience the seasons with all five senses.

The vegetable garden is a place where you can harvest a variety of vegetables throughout the four seasons.

It is an edible landscape. In this building, we will also hold workshops where the harvested vegetables can be cooked and tasted.

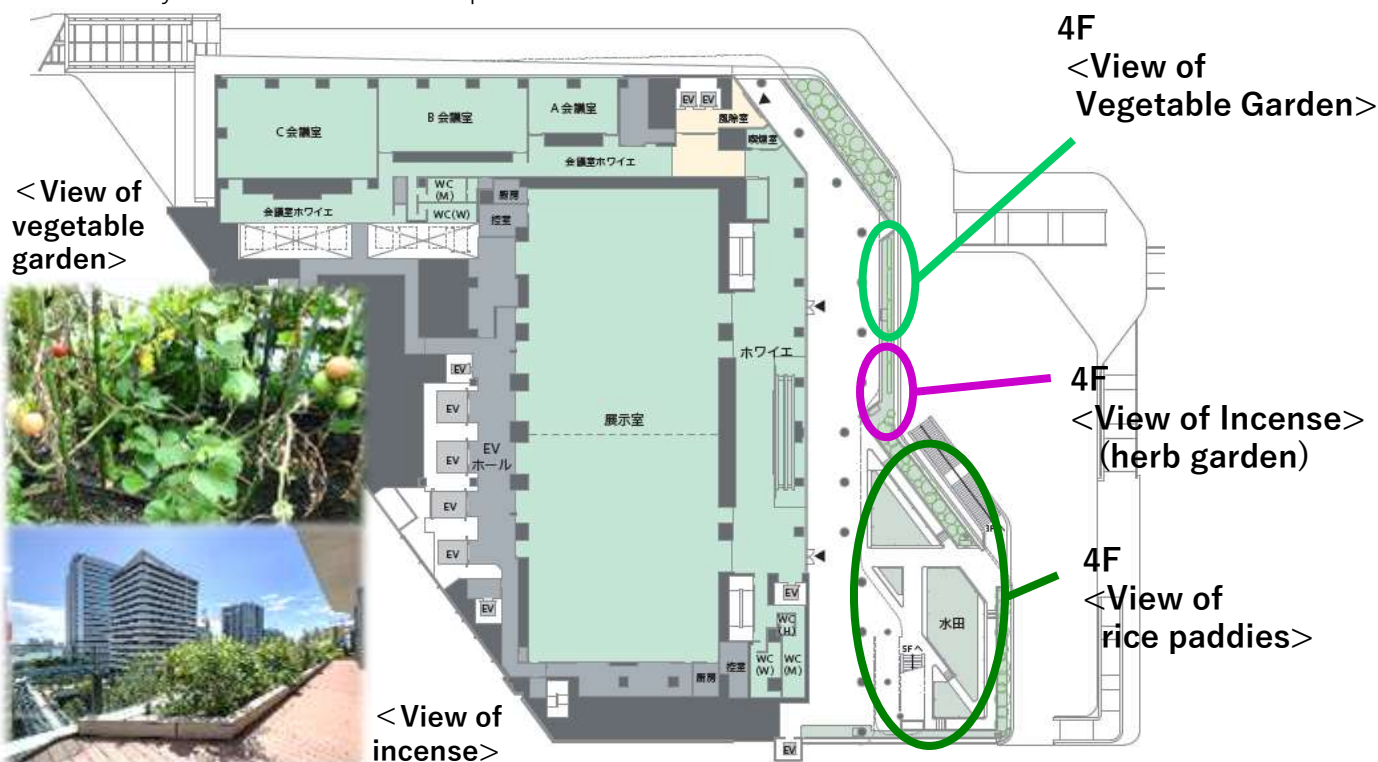
View of incense

- A herb garden where you can enjoy fragrance in various forms.

The herb garden is a place where you can enjoy the changes of the four seasons and feel the greenery around you.

You can enjoy the beauty of the fragrance and flowers. In addition, they can be used as foodstuffs and to make incense.

Ecosystem services can be experienced.



- <Vegetables that can be harvested>
Cucumbers, eggplants, cherry tomatoes, okra.
Paprika, amelica potato, island pepper, etc.
- <Herbs that can be harvested>
Basil, shiso, ashitaba, pak choi.
Rosemary, fennel, dill, etc.



<View of paddy fields>

Eight New Views of Takeshiba - An Introduction to Each View

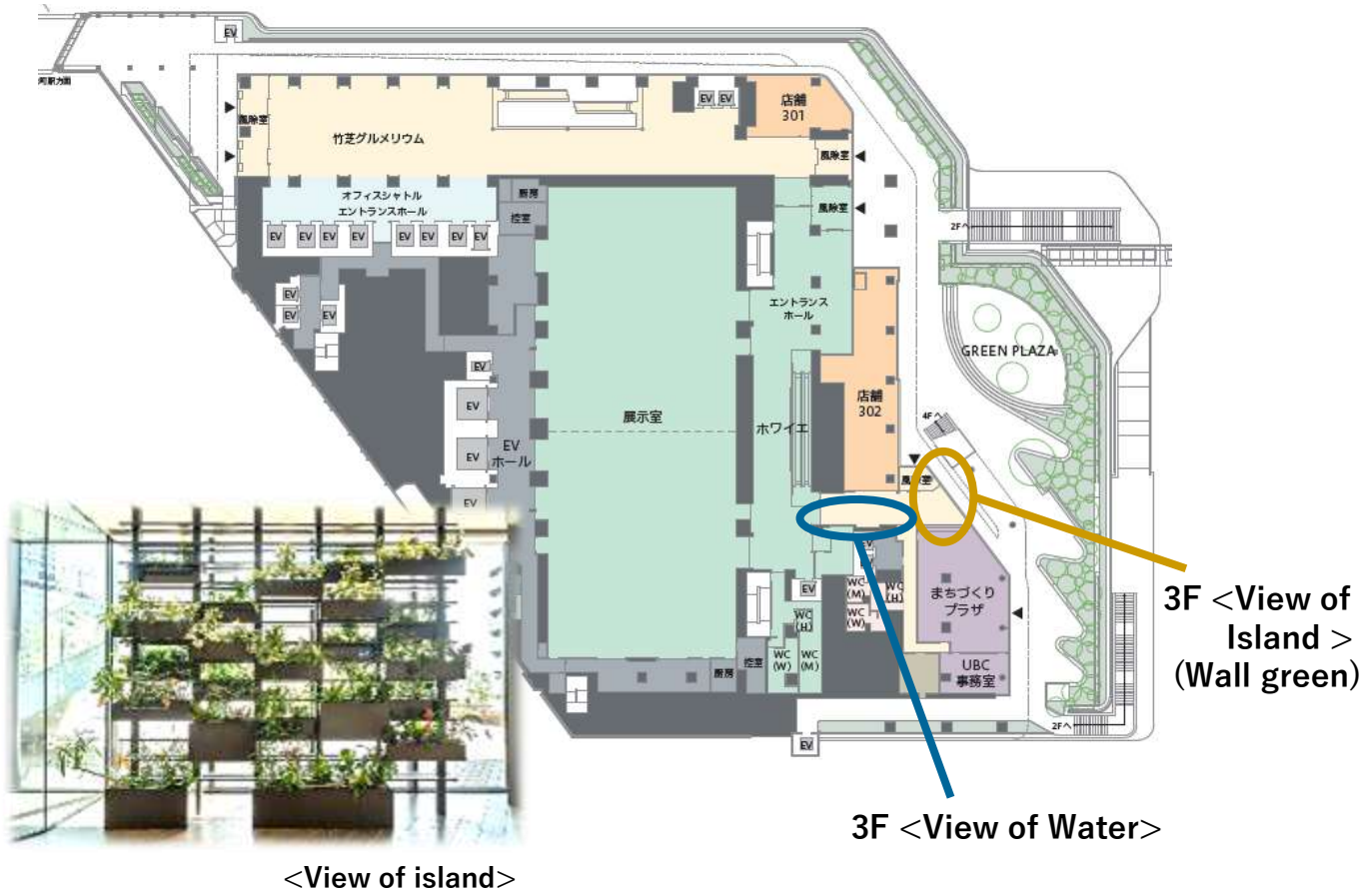
<3F>

View of Water - An aquaterrarium that expresses a small ecosystem

Nitrogen gas is transformed into nitrogen compounds by the action of bacteria in the soil. It is absorbed by plants and circulates in the natural world. The aquaterrarium in our building represents the nitrogen cycle in nature.

View of Island - Wall vegetable garden with a variety of plants representative of the island region.

As befits its location as the gateway to the Izu Islands, Ogasawara Islands, and other island regions of Tokyo, one of the products of the Tokyo Metropolitan Government's Shimasho region, ornamental plants and other plants are displayed as a wall vegetable garden.



The floor plan shows various rooms including '竹芝グレルメリウム', 'オフィスシャトル エントランスホール', '展示室', 'エントランスホール', 'ショップ 301', 'ショップ 302', 'まちづくりプラザ', and 'UBC 事務室'. A blue circle highlights the 'View of Water' area, and a yellow circle highlights the 'View of Island' area. A photograph of a wall-mounted vegetable garden is shown to the left of the plan, and a photograph of an aquaterrarium is shown below it.

<View of island>

3F <View of Water>

3F <View of Island > (Wall green)

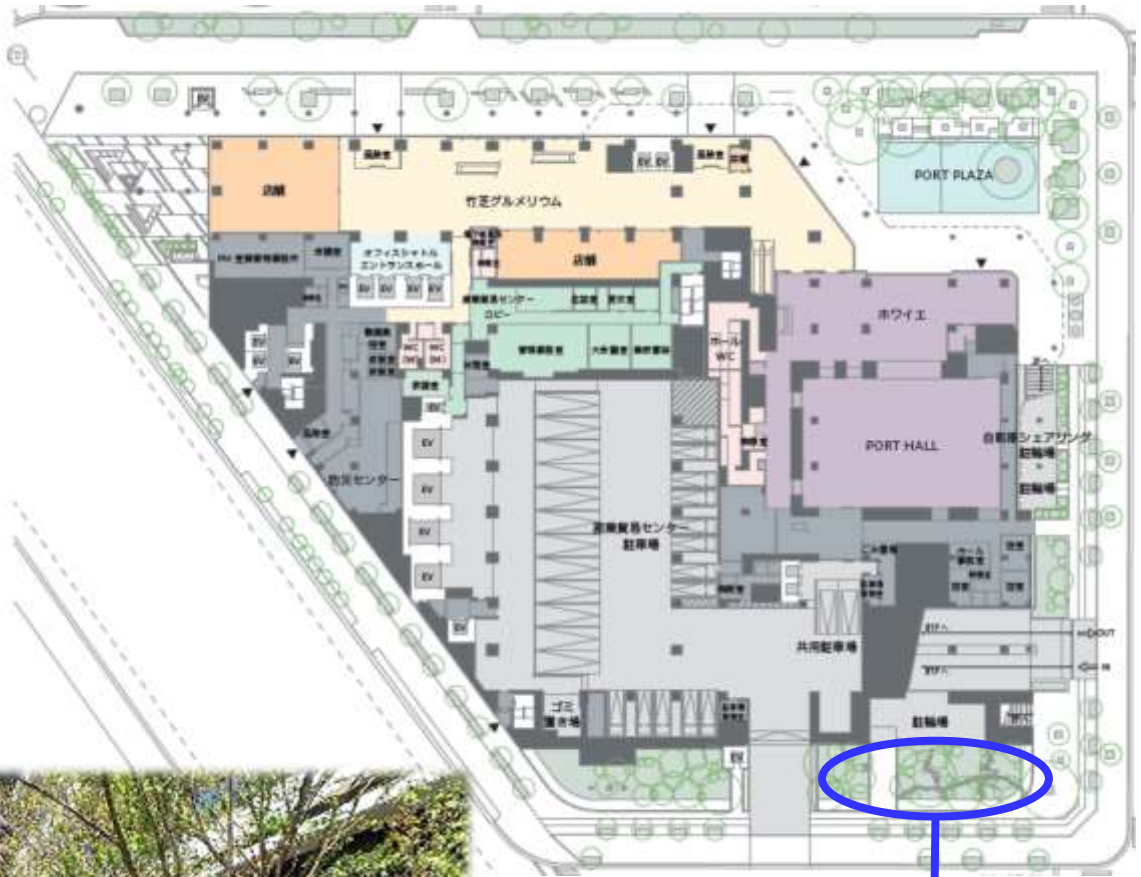


<View of water>

Eight New Views of Takeshiba - An Introduction to Each View

<1F>

View of Rain - Rain garden that temporarily stores rainwater and infiltrates underground – In cities, the promotion of a healthy water cycle is considered important for sustainable urban development. The rain garden is a multifunctional green space that prevents water damage by infiltrating rainwater underground. It will contribute to a healthy urban water cycle.



1F <View of Rain>



<View of Rain>

The base for Takeshiba UBC activities - 3rd Floor Takeshiba Machizukuri Plaza

Anyone can use Takeshiba UBC and Takeshiba Machizukuri Plaza.

The "**Takeshiba Machizukuri Plaza**" located on the 3rd floor of the building will be the base of the "Takeshiba UBC" where office workers, local residents and related parties can gather together for environmental education, community exchange and information dissemination with the aim of creating a green environment through the "Takeshiba New Eight Scenic Views".

In addition, a variety of environmental communication programs and events will be held here, including lectures and workshops on biodiversity and environmental conservation, where you can learn while having fun with your friends.

When no events are being held, anyone is free to enter at any time. Please feel free to stop by and take a break, enjoy lunch, or browse through the books and magazines related to environmental conservation that are available inside.

You are also free to bring your own environmental information flyers and event information leaflets.

The UBC Information Desk will be open weekly¹ at the Takeshiba Machizukuri Plaza.

The **UBC Information Desk** will be open **every Wednesday from 11:00 to 14:00** in the space.

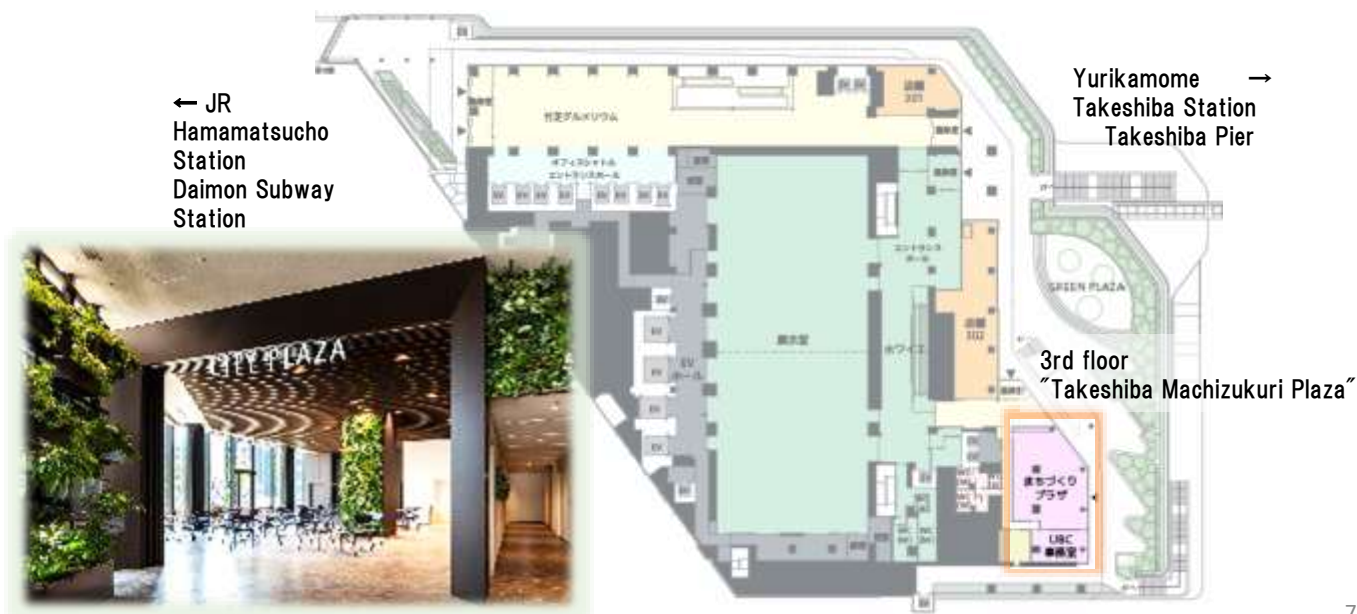
The following is a guide to various information about Takeshiba New Eight Views and events such as the "Takeshiba New Eight Views" environmental communication program held here. We also provide information on other environmental and community-related topics, so please feel free to use this site.

Books on the environment, living organisms, SDGs, etc. are available at the Takeshiba Machizukuri Plaza.

Inside the space, there are books, illustrated books and periodicals that provide information on environmental conservation and biodiversity, and books and booklets that introduce basic knowledge about the SDGs. These are available for anyone to browse freely.

We also have flyers with columns on the theme of "Takeshiba's New Eight Views" and information on environmental communication programs that you can take home.

We plan to introduce new books, booklets, and flyers as needed.



Green Work Style": Working while feeling the water and greenery

Tokyu Land Corporation is developing a **"Green Work Style"** in the office building business to solve various problems faced by working people by utilizing the power of greenery. The **Tokyo Port City Takeshiba Office Tower** will also utilize the **"Takeshiba New Eight Views"** to propose a new work style in which people can work while enjoying the water and greenery, thereby supporting the improvement of the physical and mental health of office workers and enhancing their productivity. Tokyu Land Corporation is focusing on the power of greenery, which influences the health, mind and inspiration of workers, and is taking five actions to incorporate it into the office to create an ideal working environment for all workers.

Green Action 01

Protecting the Health of Workers

The building is surrounded by a variety of trees, and in the city center. You will feel close to nature that you cannot experience. From the time you arrive at work to the time you leave, you can always be in contact with greenery. We will maintain and improve the health of our employees.



Port Plaza

Green Action 02

Reduce the stress of working people.

More than 150 types of plantings create a variety of green spaces. It's a space to change your mind. A space to change your mind. Incorporate greenery and It relieves the stress of working people.



Green Plaza

Green Action 03

Generating Inspiration for Workers

There are counter seats and meeting tables. You can work while feeling the greenery. Incorporating greenery into spaces that require thinking and We will bring out the creativity of our workers.



Terrace

Green Action 04

Fostering bonds among workers

At eye level from the waiting area, surrounded by greenery. You can feel the swaying of the water and the greenery. Welcoming People Incorporating greenery into the space and Facilitate communication.



Office Lobby

Green Action 05

Increasing the motivation of workers

Contact with greenery through rice planting, vegetable and herb cultivation, etc. We have created a space where we can meet. By being proactively involved with greenery, we can make the office Facilitate the formation of a community.



Vegetable and Herb Garden