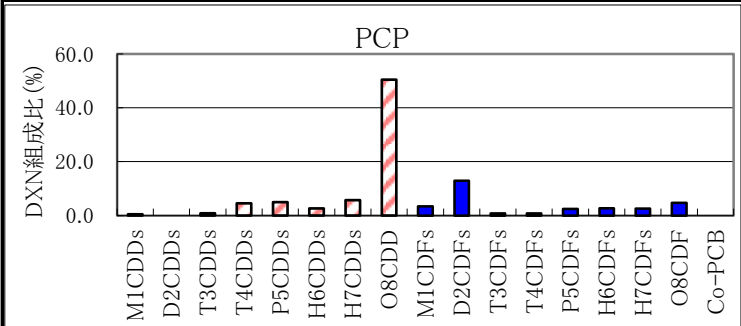
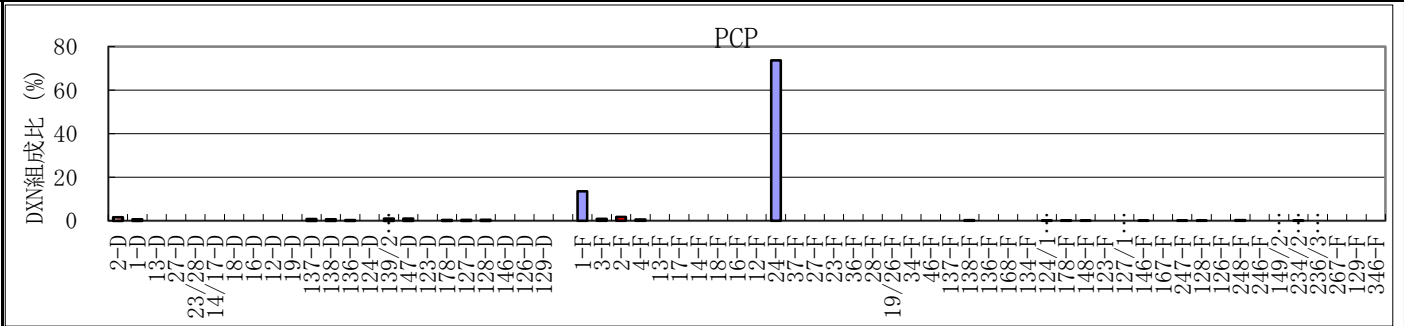


低塩素化ダイオキシン類分析結果(PCP、CNP、焼却、食塩電解)

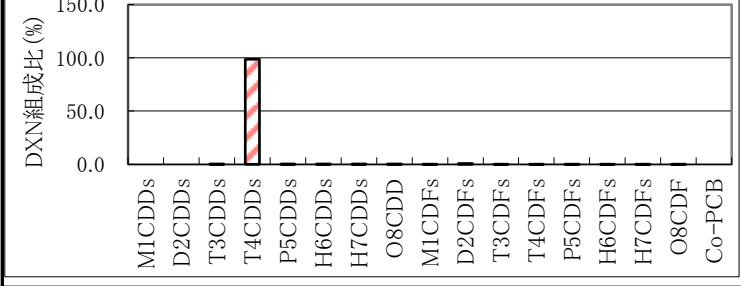
同族体 (実測濃度組成比【%】)



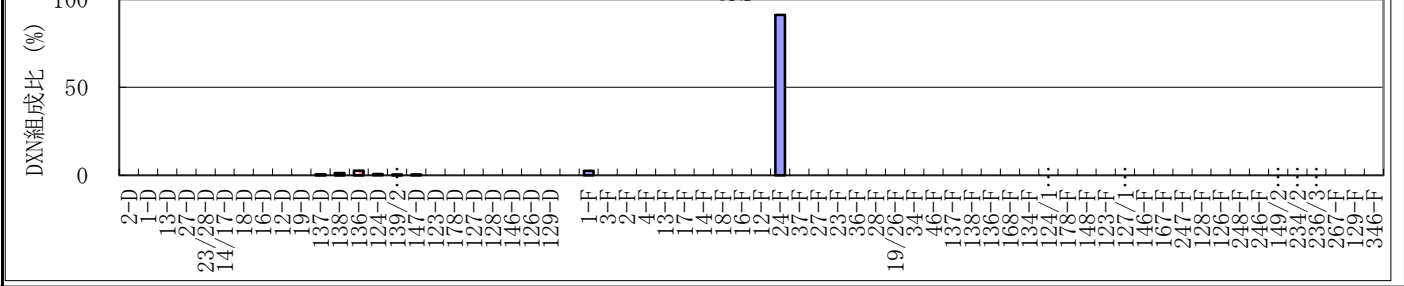
異性体 (実測濃度組成比【%】、1~3塩素のみ)



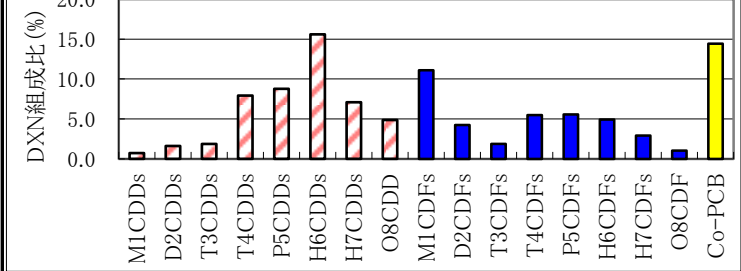
CNP



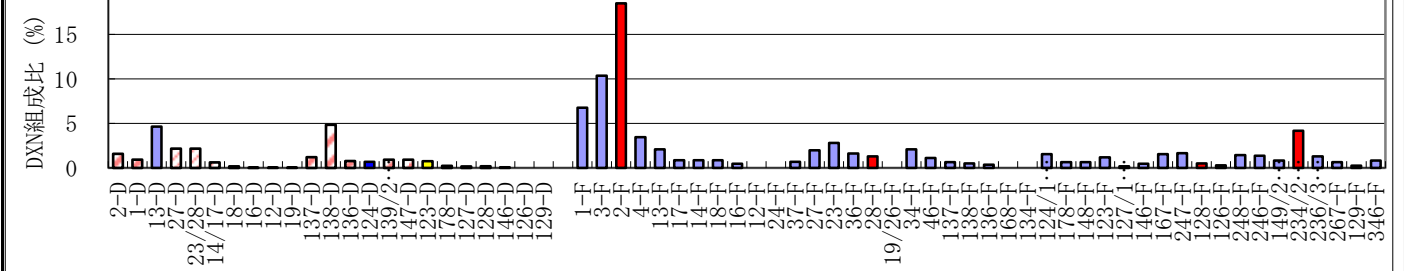
CNP



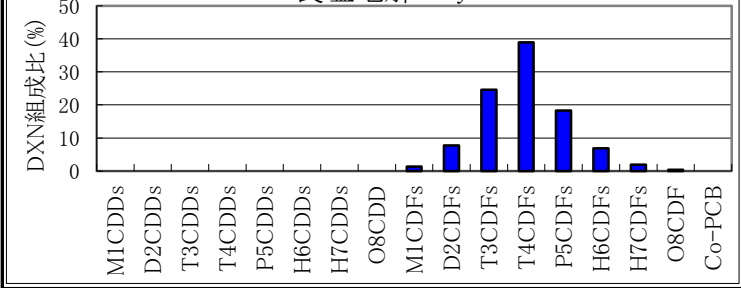
焼却



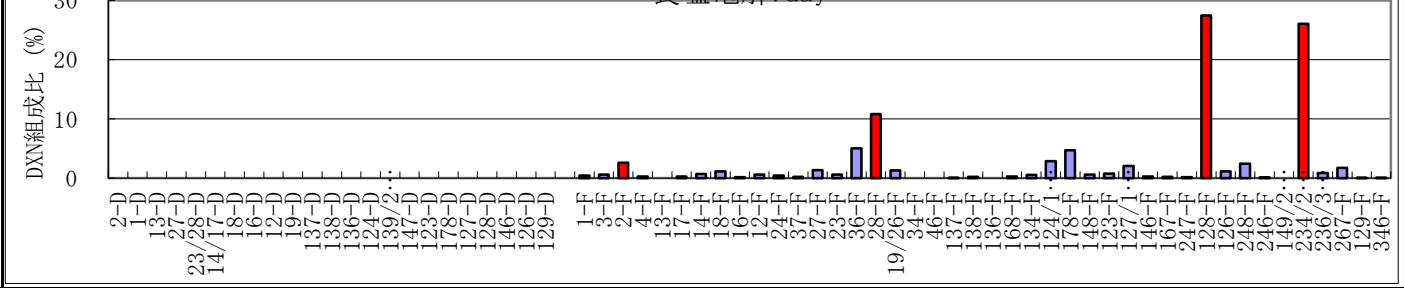
焼却



食塩電解7day

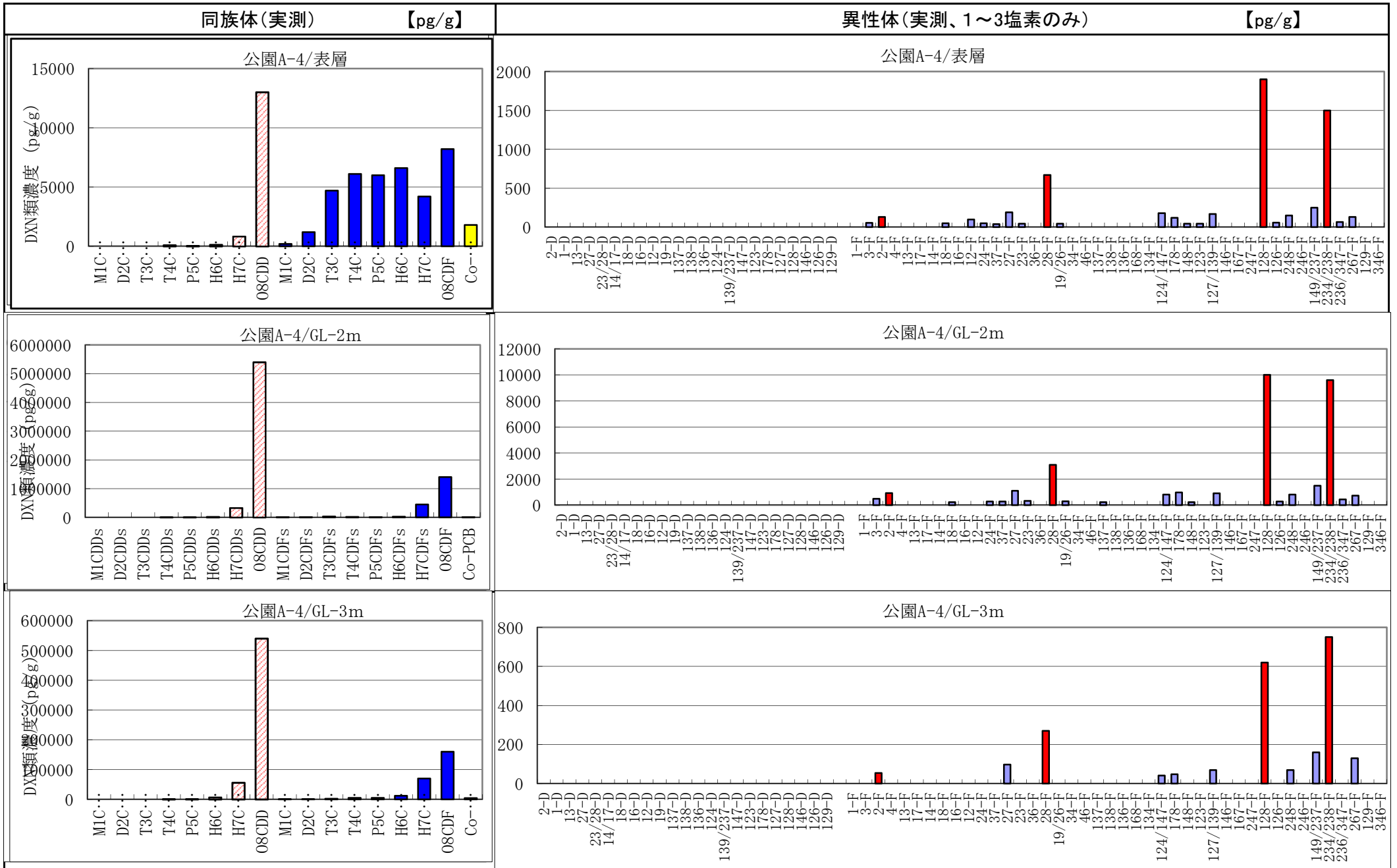


食塩電解7day

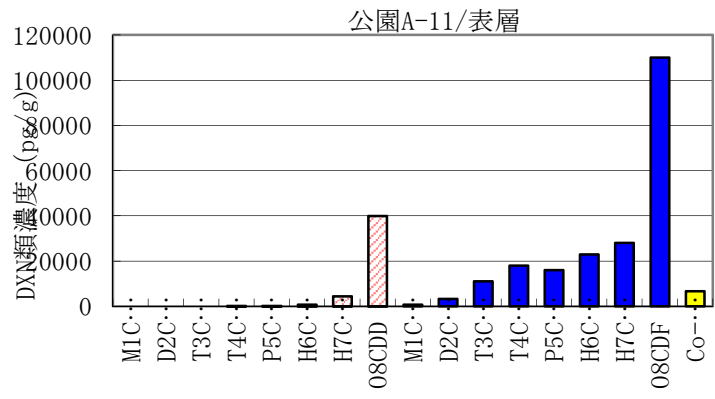


低塩素化ダイオキシン土壌分析結果(尾久の原公園、東尾久運動場)

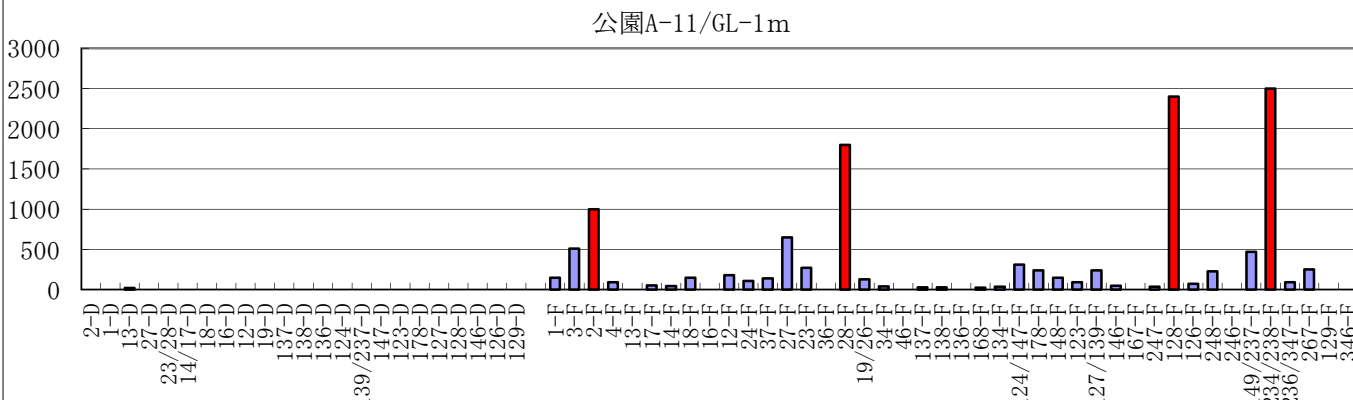
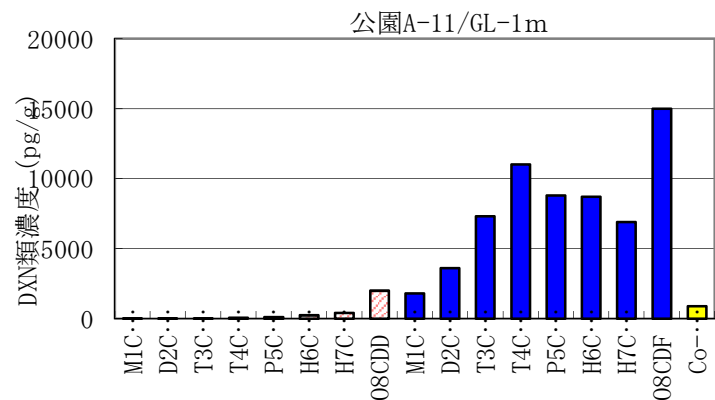
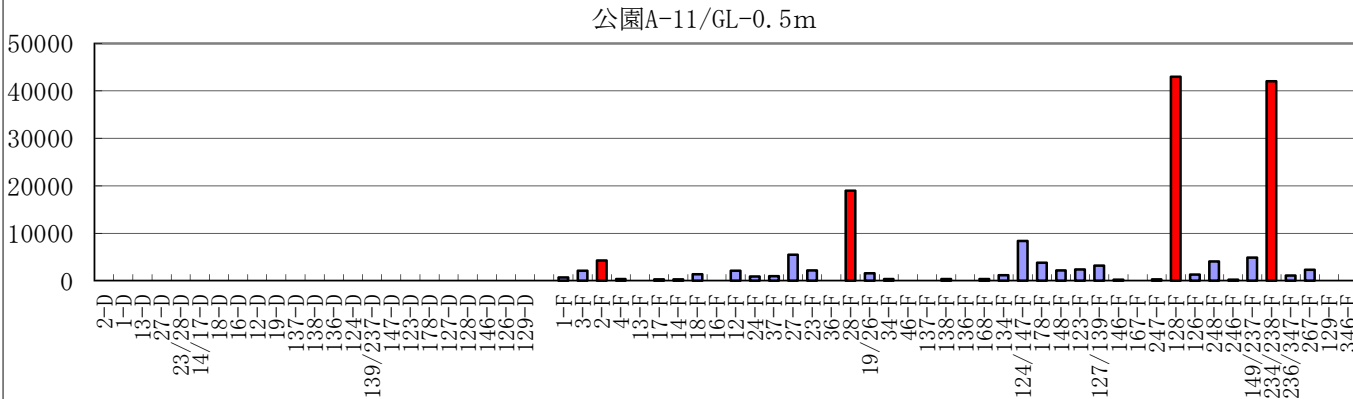
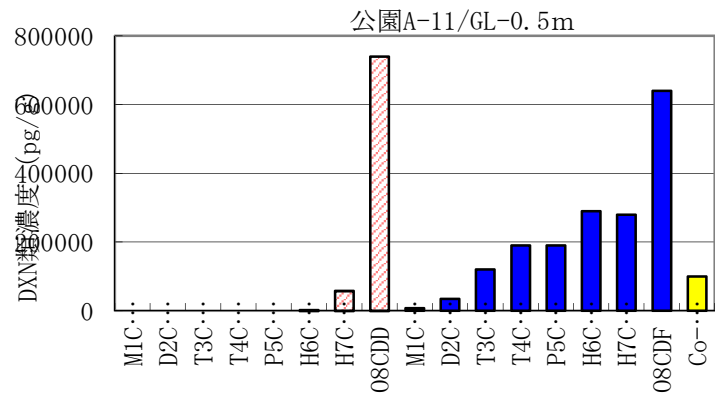
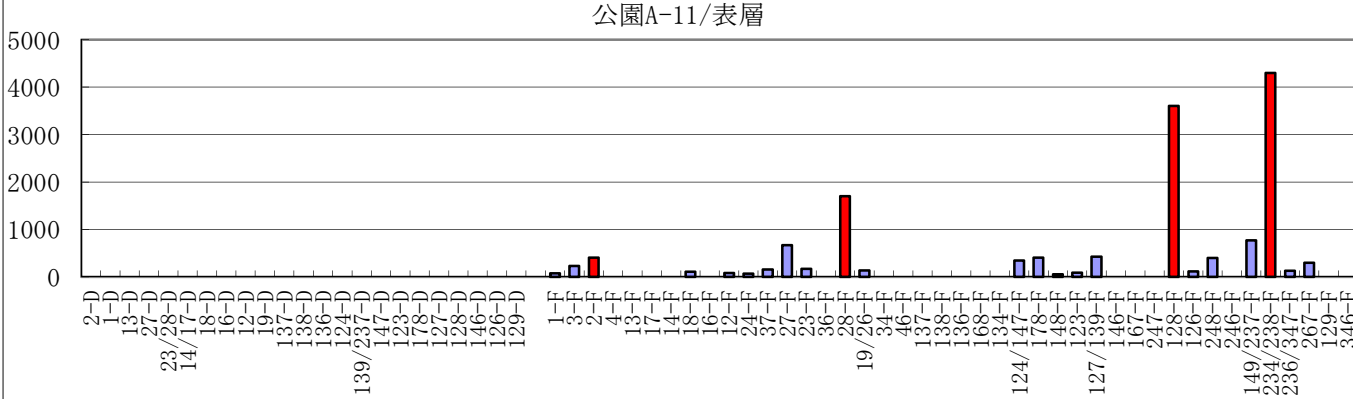
食塩電解7daysで特徴的に現れる異性体(2-F, 28-F, 128-F, 234/238-F)が、多くの地点において同様に特徴的に現れている。

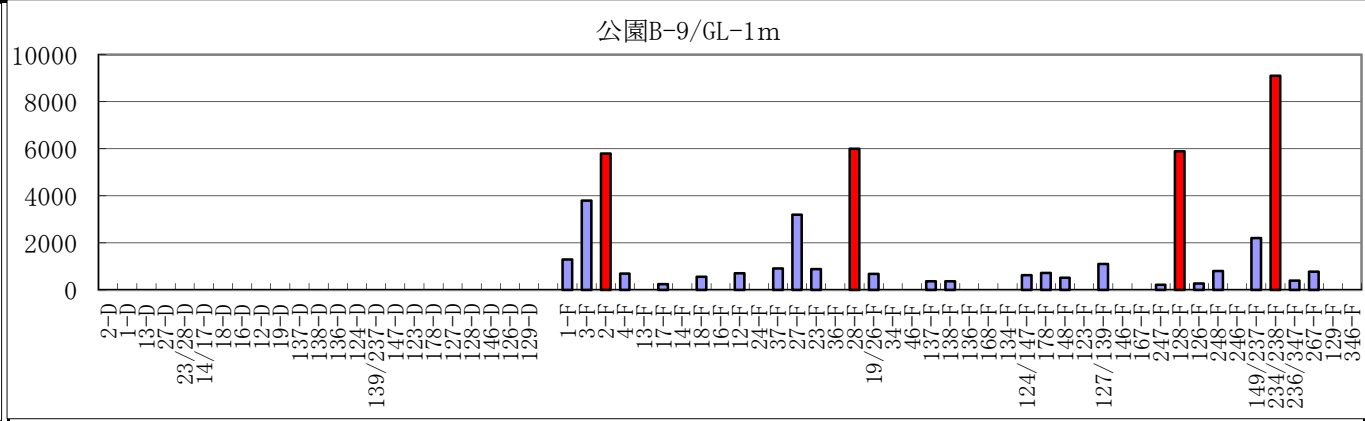
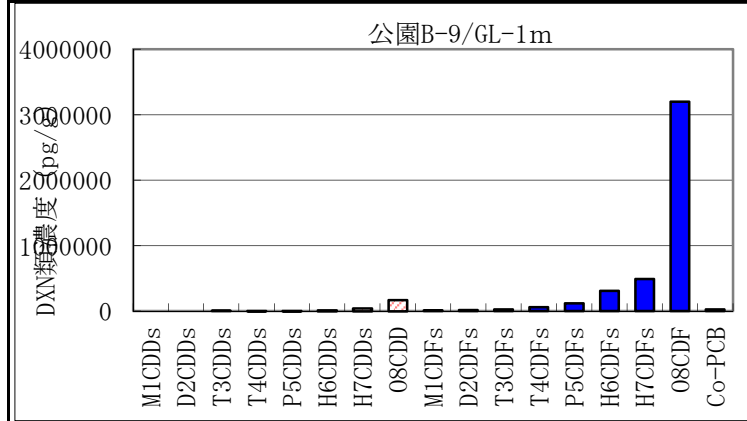
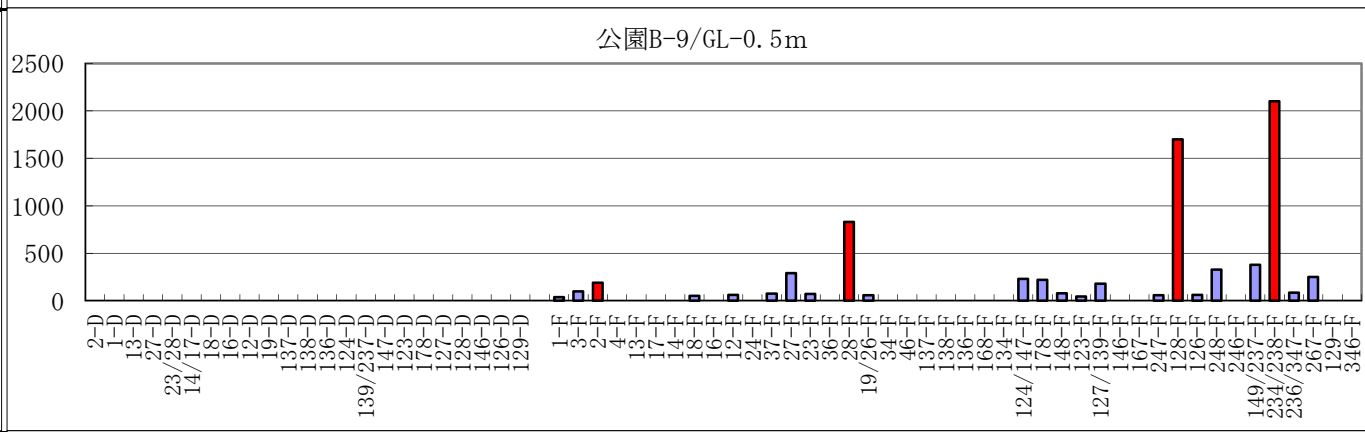
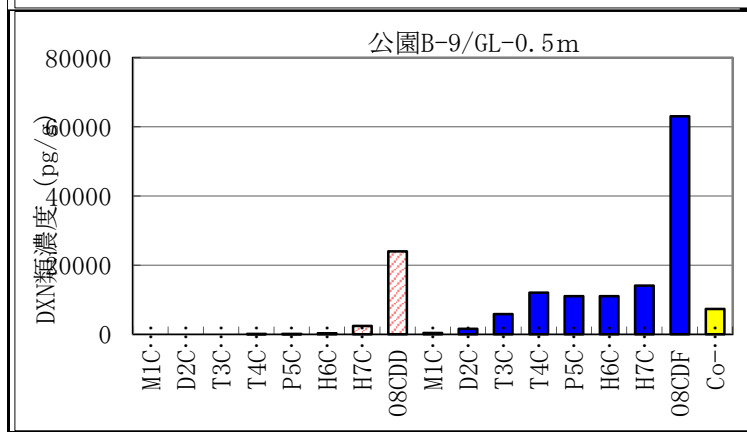
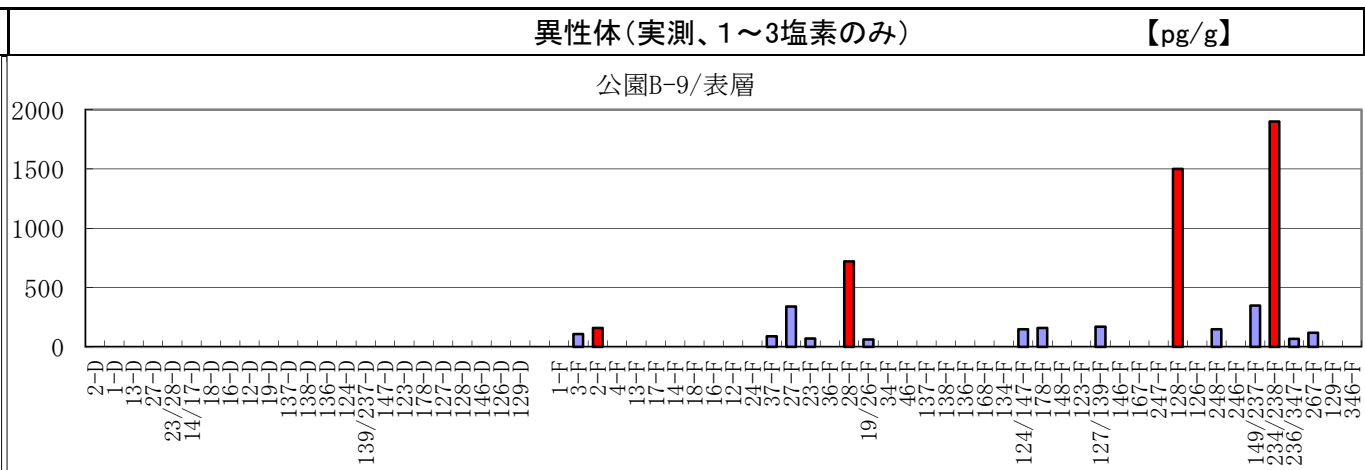
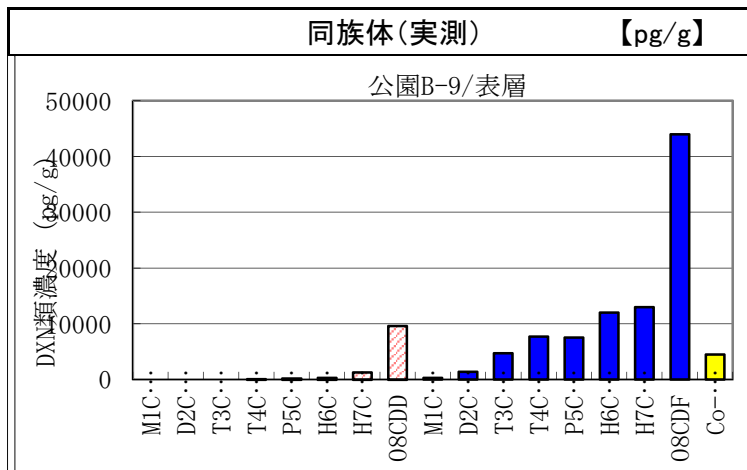


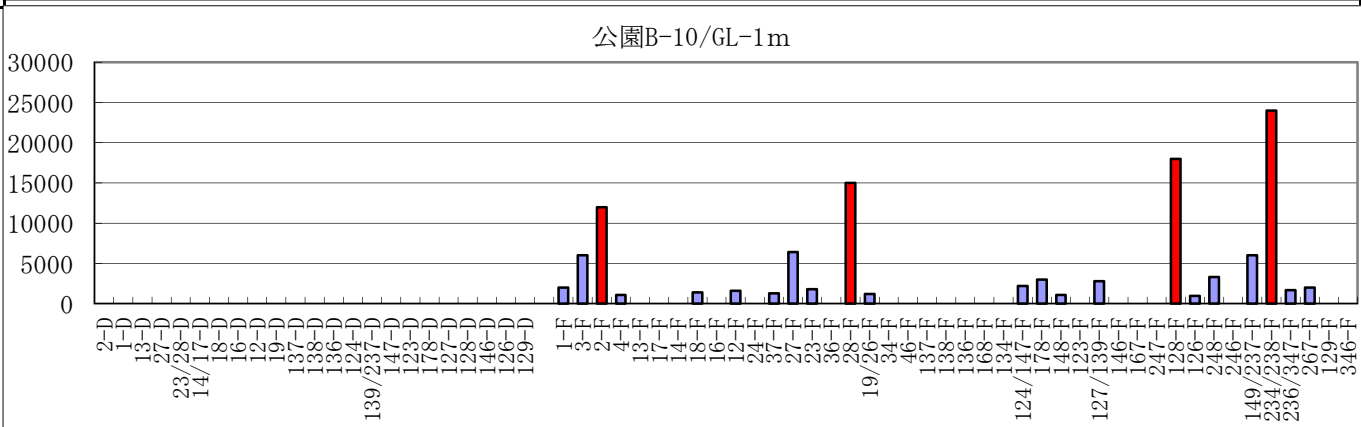
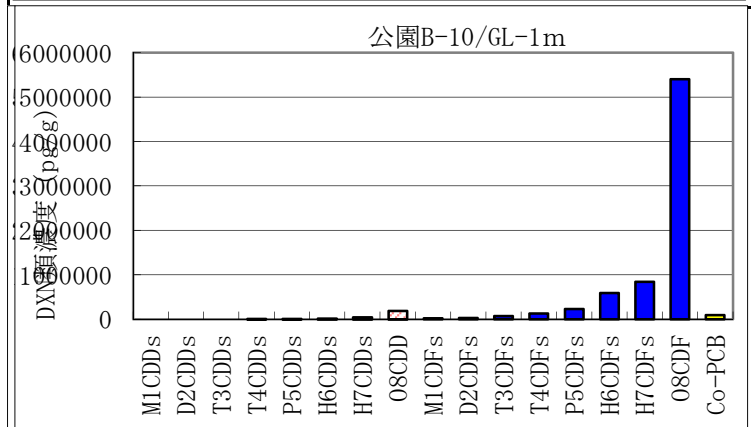
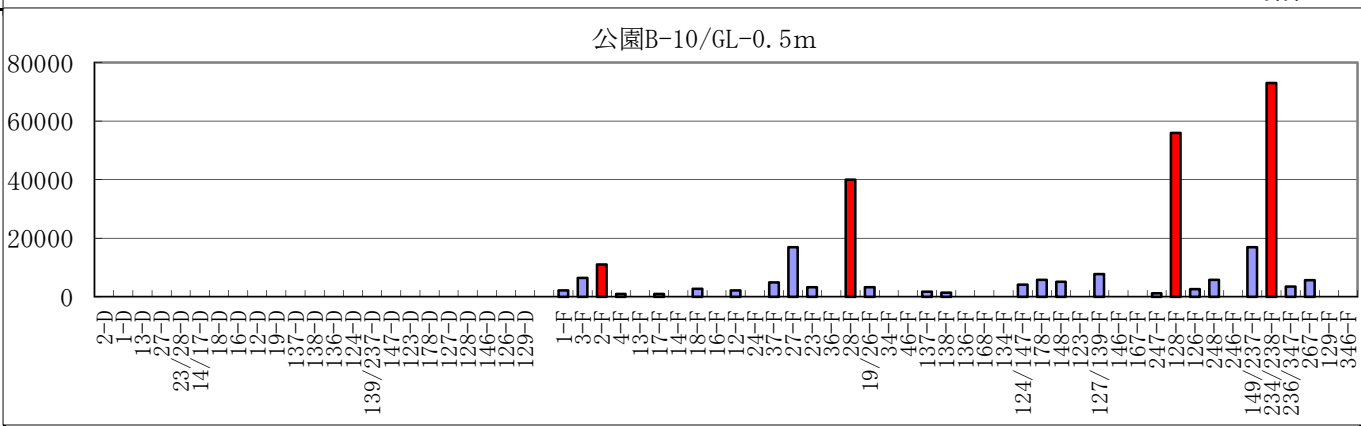
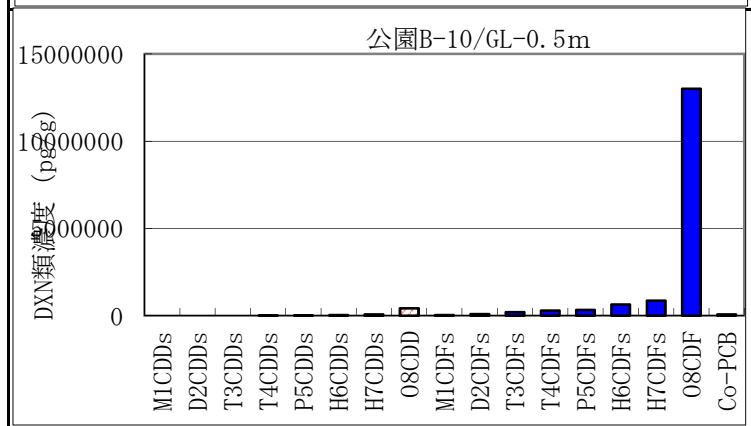
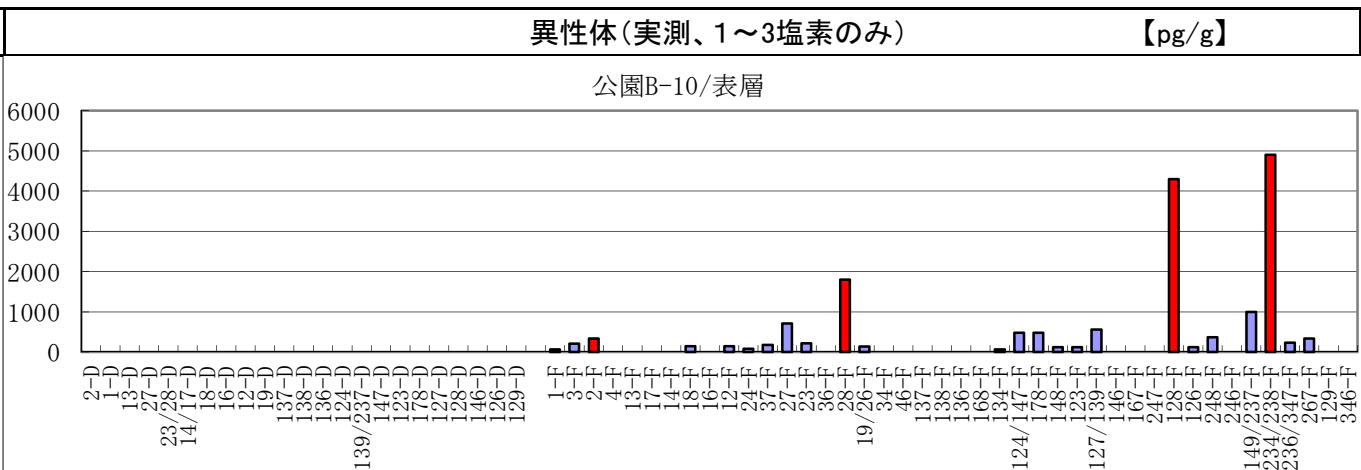
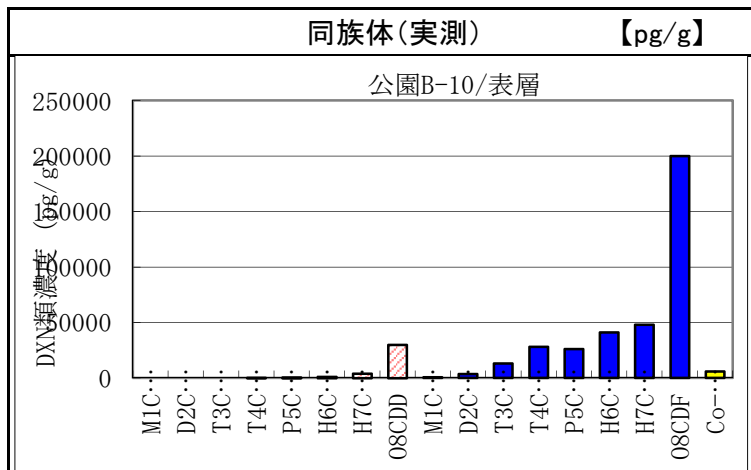
同族体(実測) 【pg/g】



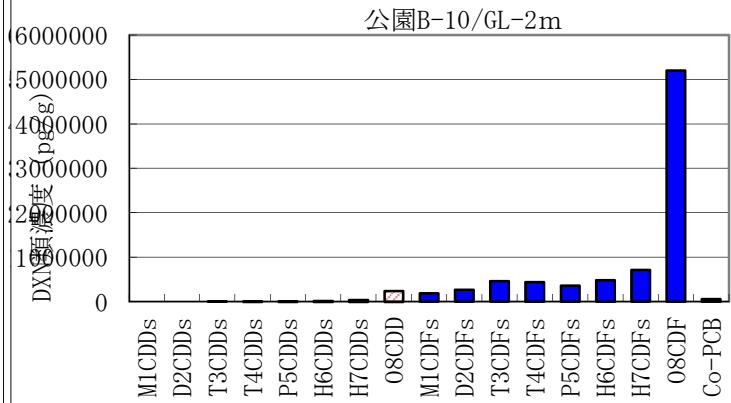
異性体(実測、1~3塩素のみ) 【pg/g】



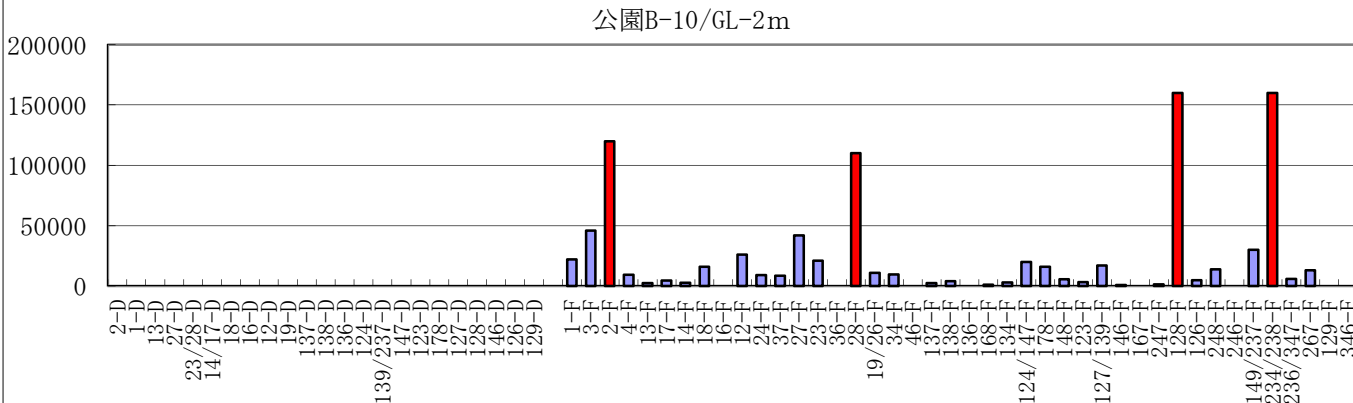




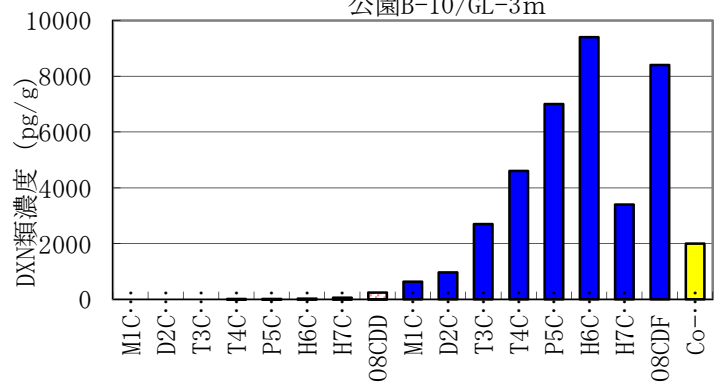
同族体(実測) 【pg/g】



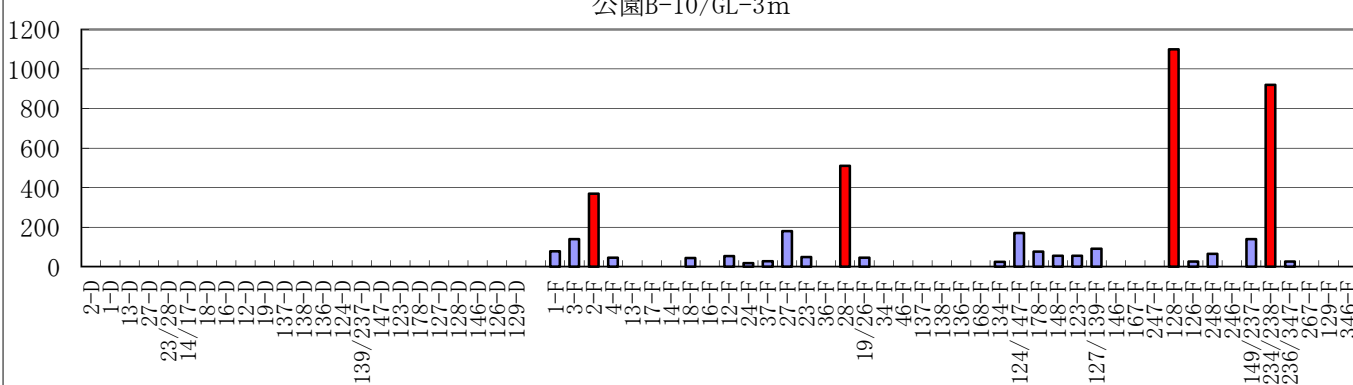
異性体(実測、1~3塩素のみ) 【pg/g】



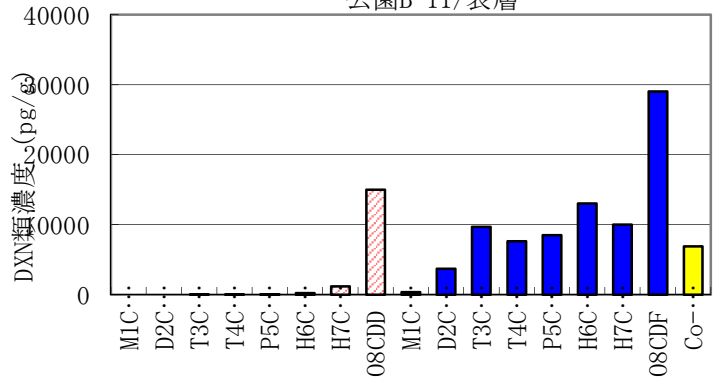
公園B-10/GL-3m



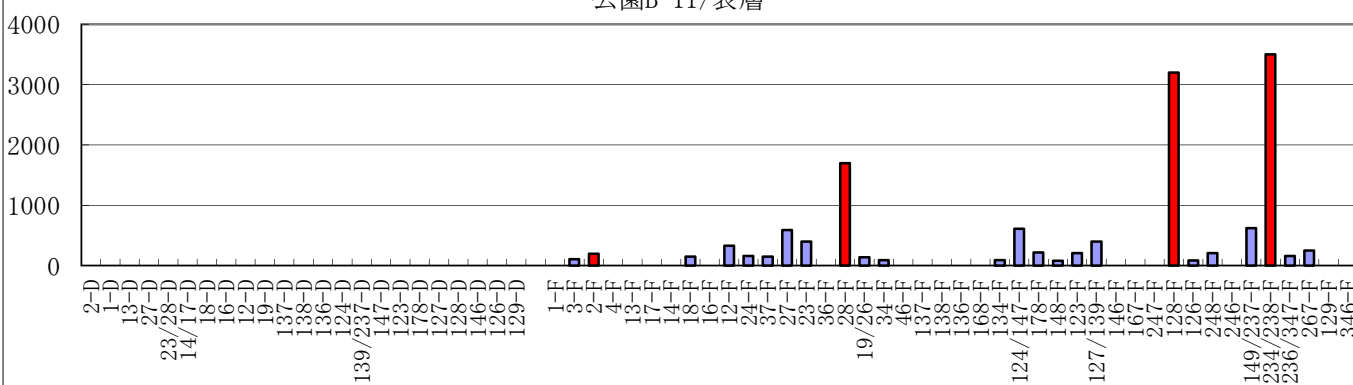
公園B-10/GL-3m



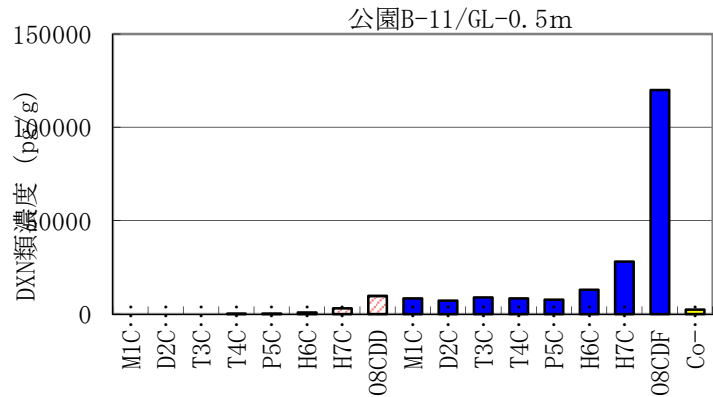
公園B-11/表層



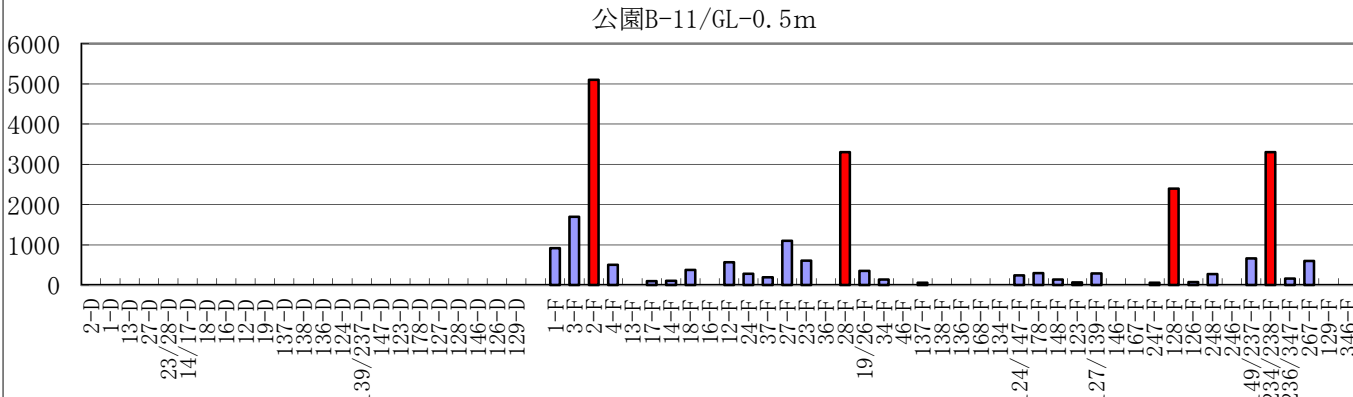
公園B-11/表層



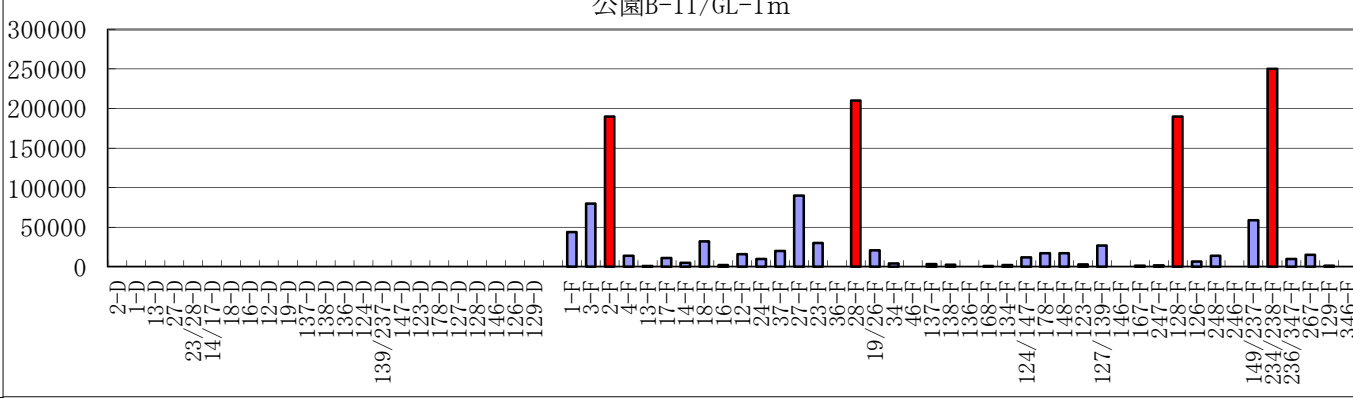
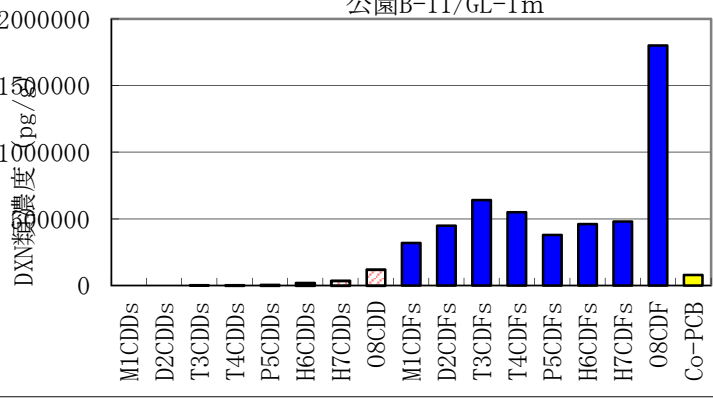
同族体(実測) 【pg/g】



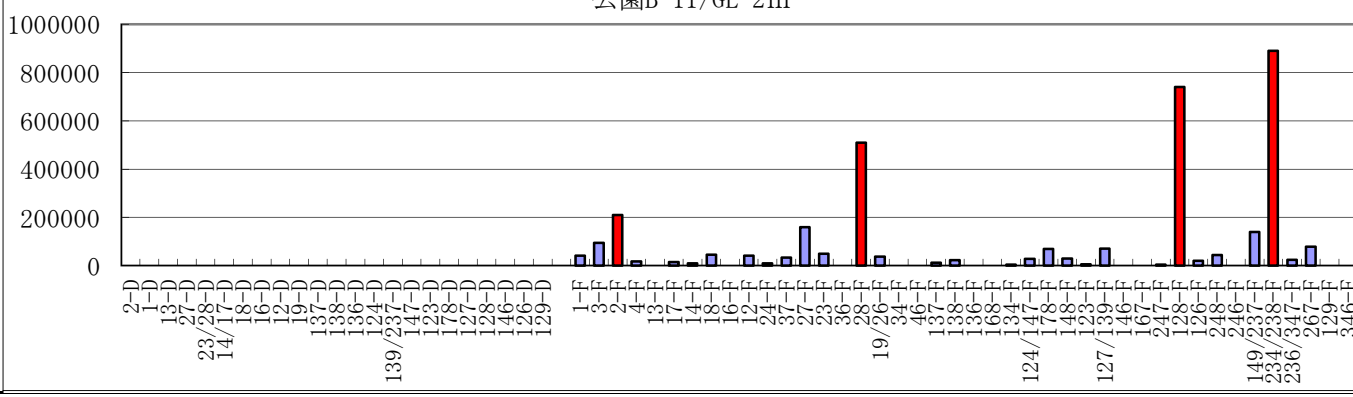
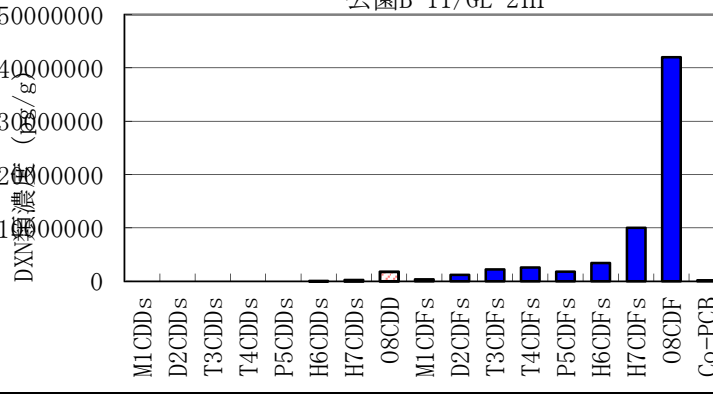
異性体(実測、1~3塩素のみ) 【pg/g】



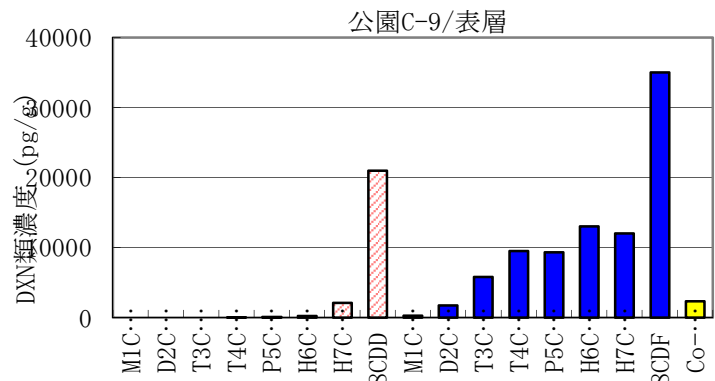
公園B-11/GL-1m



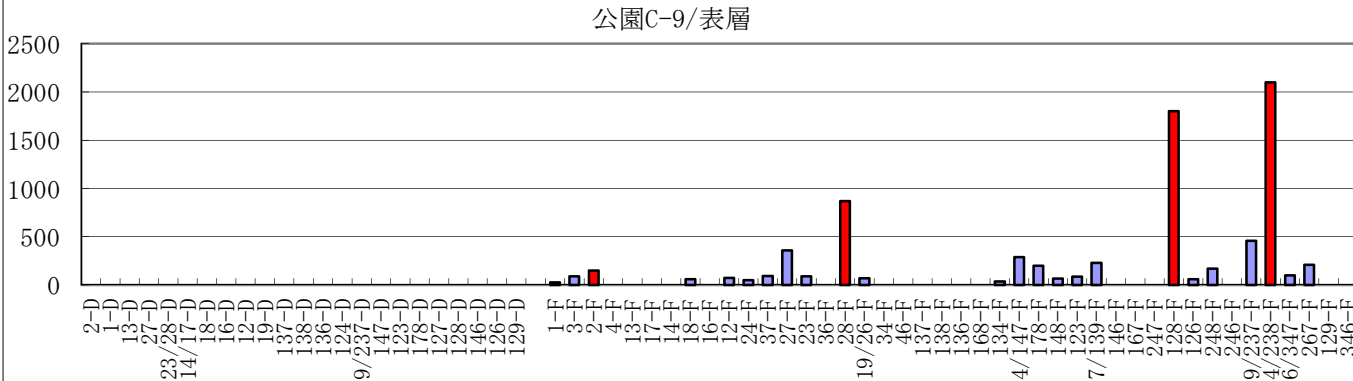
公園B-11/GL-2m



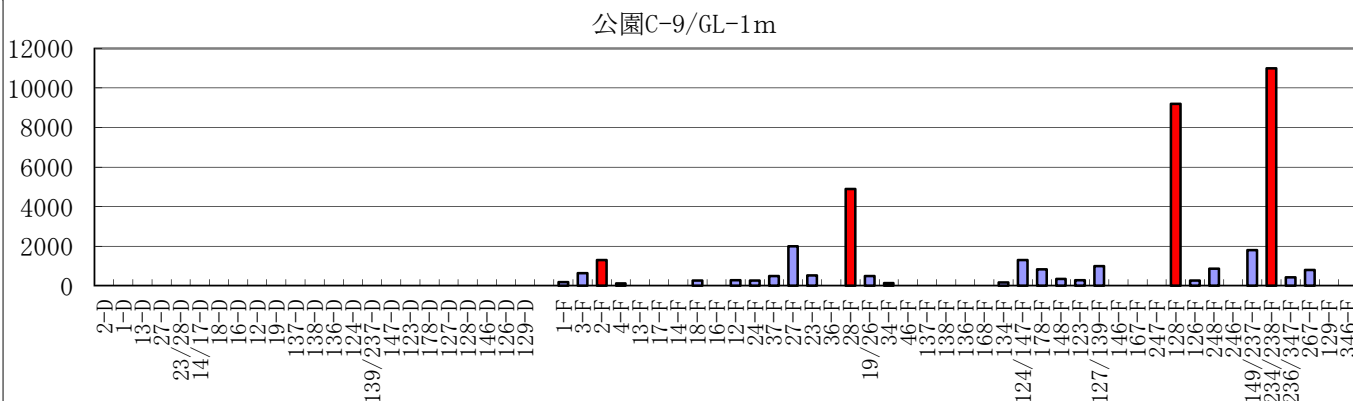
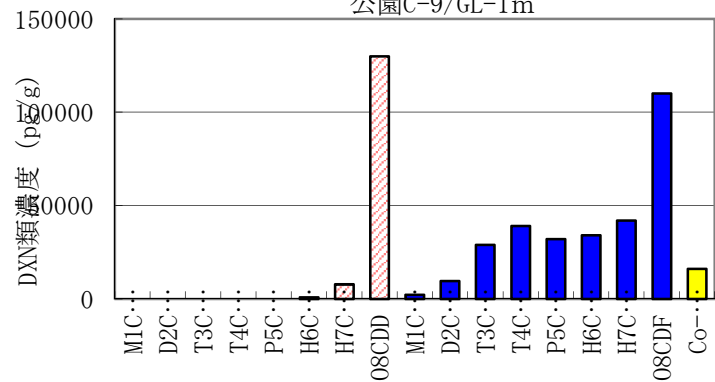
同族体(実測) 【pg/g】



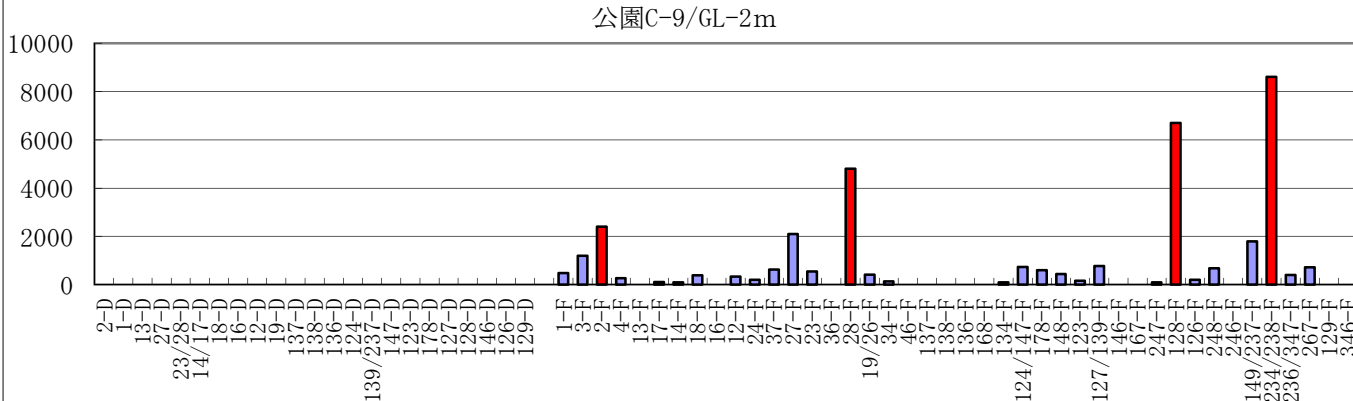
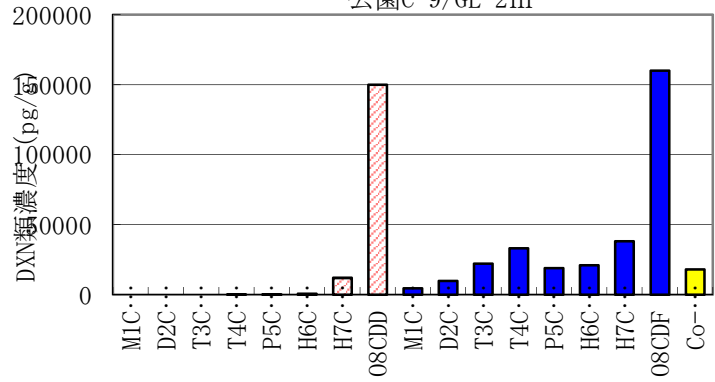
異性体(実測、1~3塩素のみ) 【pg/g】



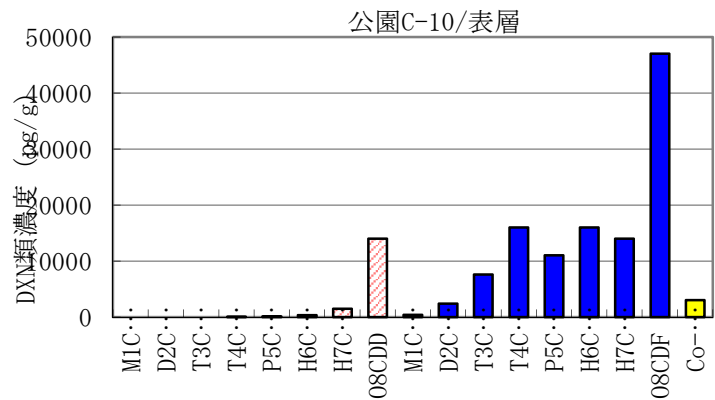
公園C-9/GL-1m



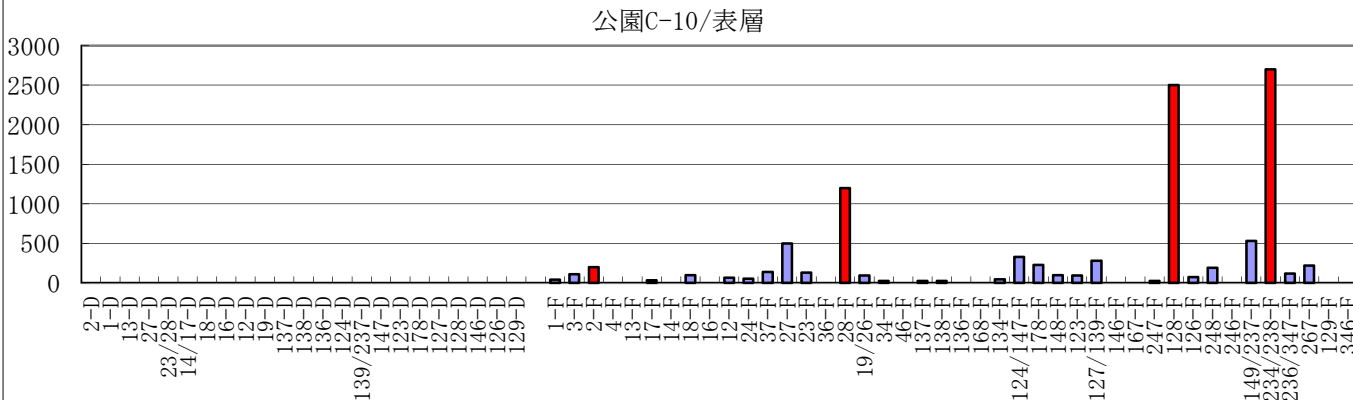
公園C-9/GL-2m



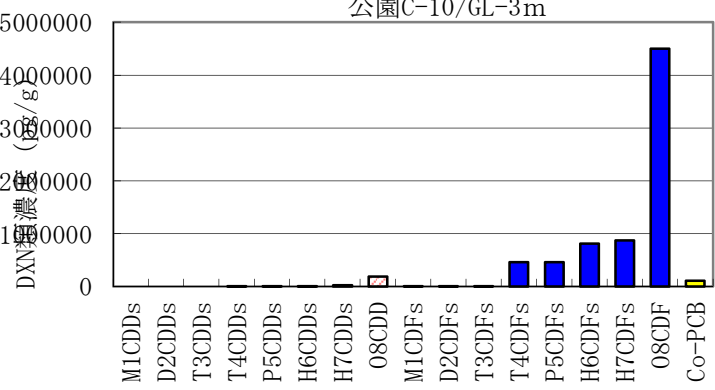
同族体(実測) 【pg/g】



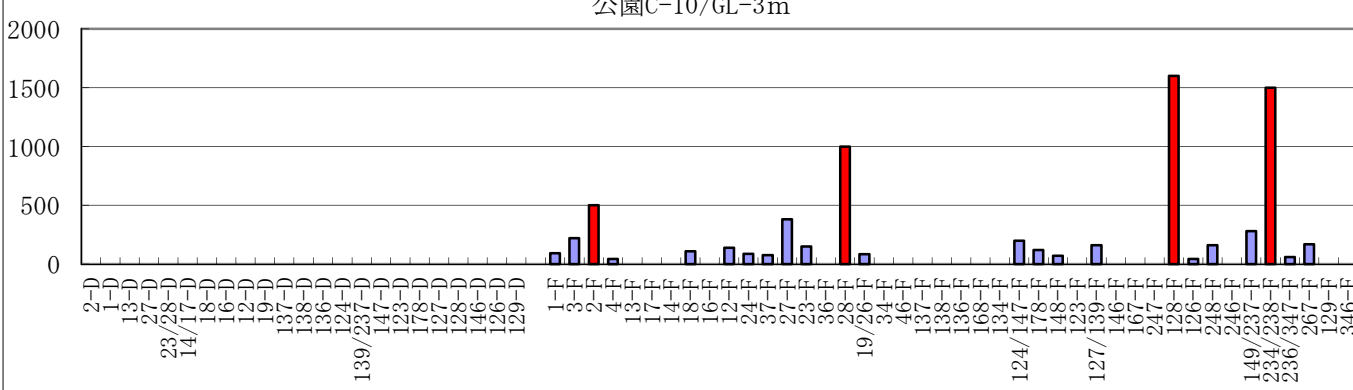
異性体(実測、1~3塩素のみ) 【pg/g】



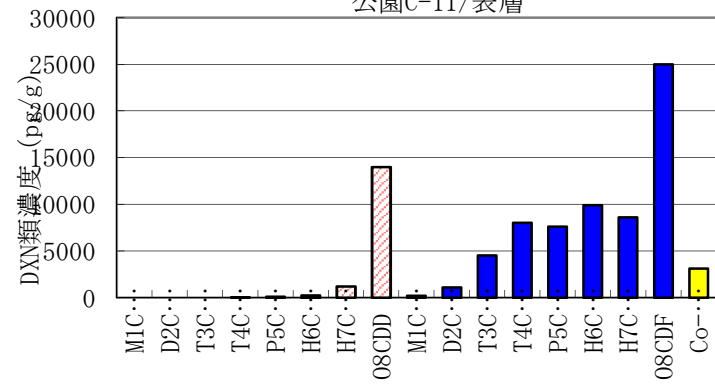
公園C-10/GL-3m



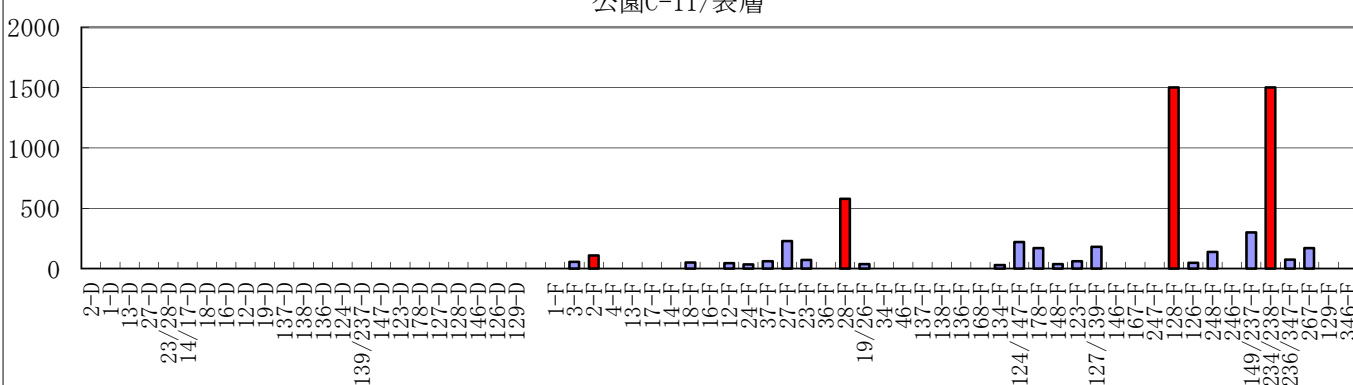
公園C-10/GL-3m



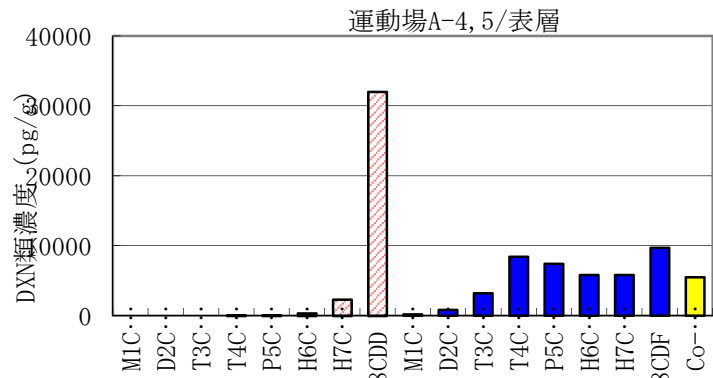
公園C-11/表層



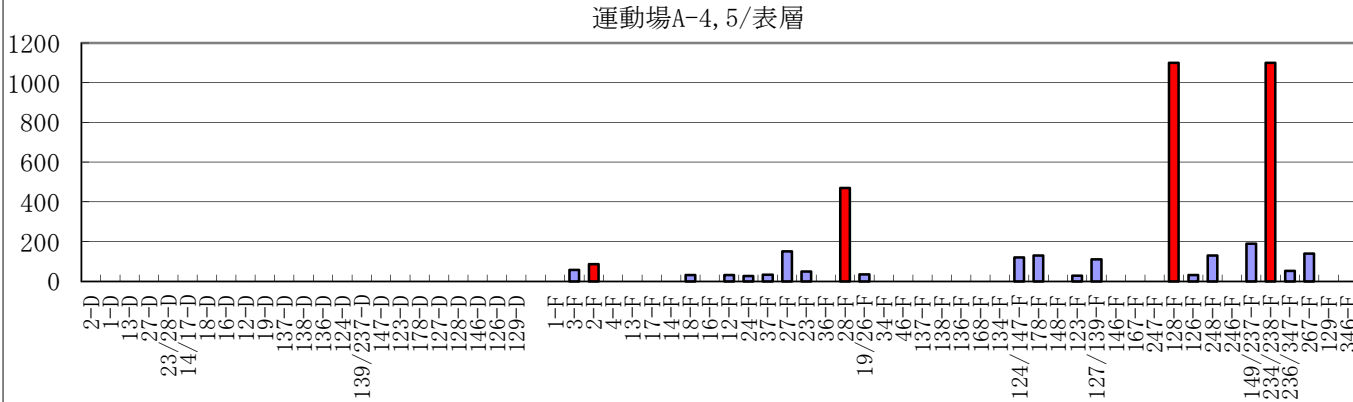
公園C-11/表層



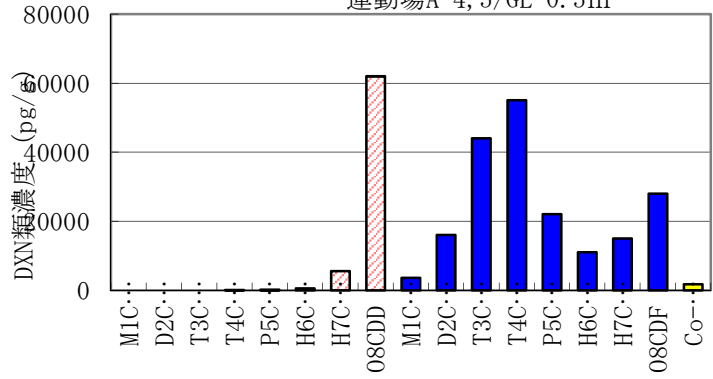
同族体(実測) 【pg/g】



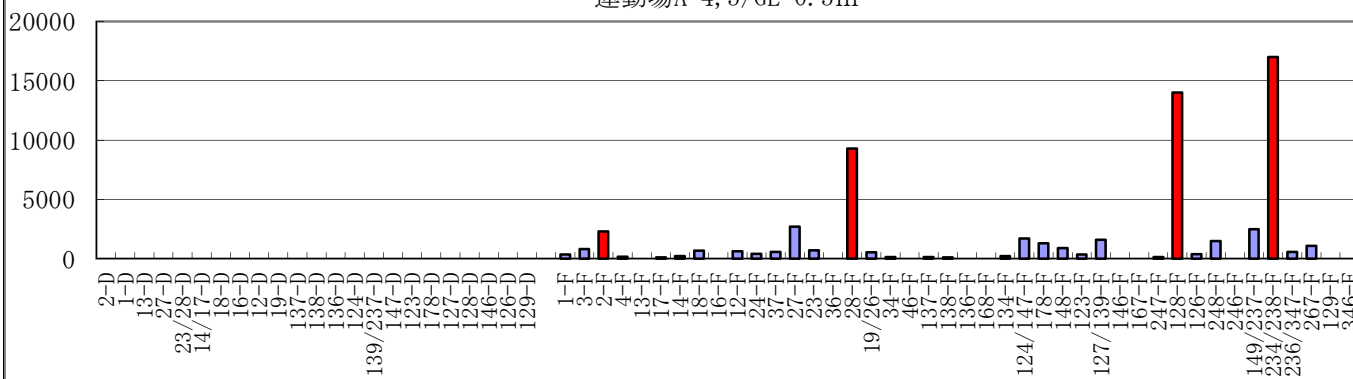
異性体(実測、1~3塩素のみ) 【pg/g】



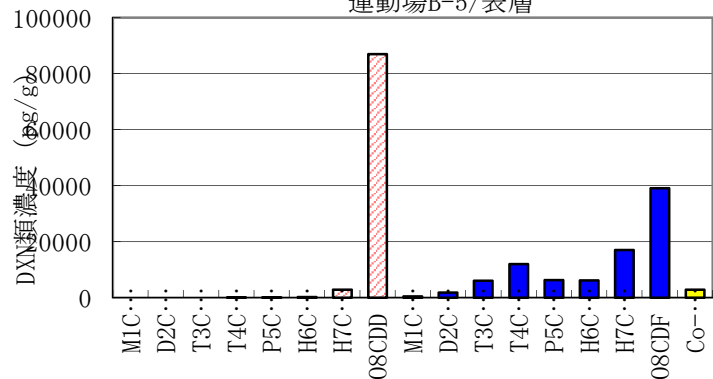
運動場A-4, 5/GL-0.5m



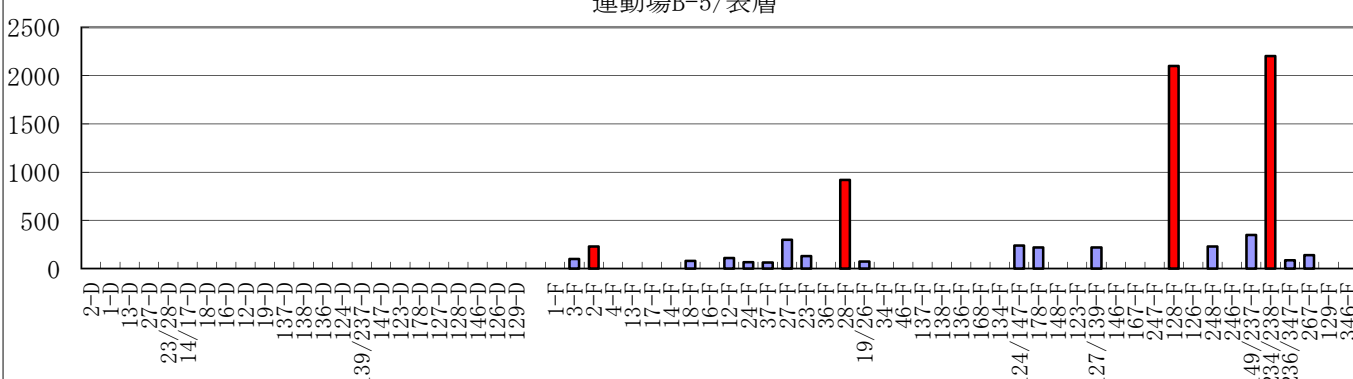
運動場A-4, 5/GL-0.5m



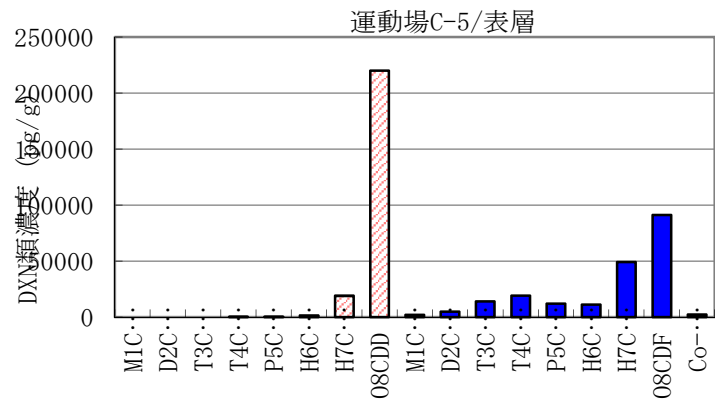
運動場B-5/表層



運動場B-5/表層



同族体(実測) 【pg/g】



異性体(実測、1~3塩素のみ) 【pg/g】

